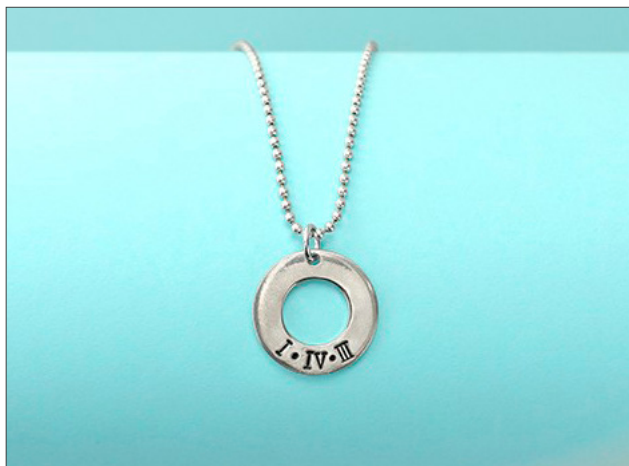


## Personalized Jewelry

Create a one-of-a-kind piece of jewelry using ImpressArt stamps, tools, and supplies!



### HOW TO MAKE IT



#### STEP 1

Practice stamping with the Metal Stamping Hammer to get a feel for how much force is needed to create the desired stamp depth. Once you have the hang of it, choose a design and the blank charm for your jewelry.



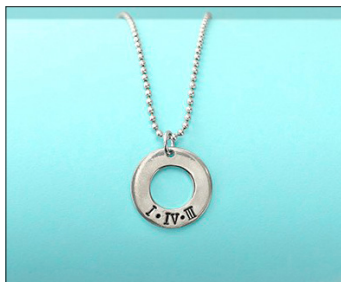
#### STEP 2

Place your blank on the Steel Block, and stamp your design with the Metal Shaping Hammer. Use a Simple Strike Jig to keep your stamp in place and protect your fingers. You can also add Stamp Straight Tap to ensure your design is stamped as planned.



#### STEP 3

Stamp words, numbers, and images unique to you, or create a personal gift for someone else.



#### STEP 4

Add a Ball Chain to create a necklace. Run the tip of the Stamp Enamel Marker over the stamped area for an old-world finishing touch.