

## Resin Casts in Plastalina



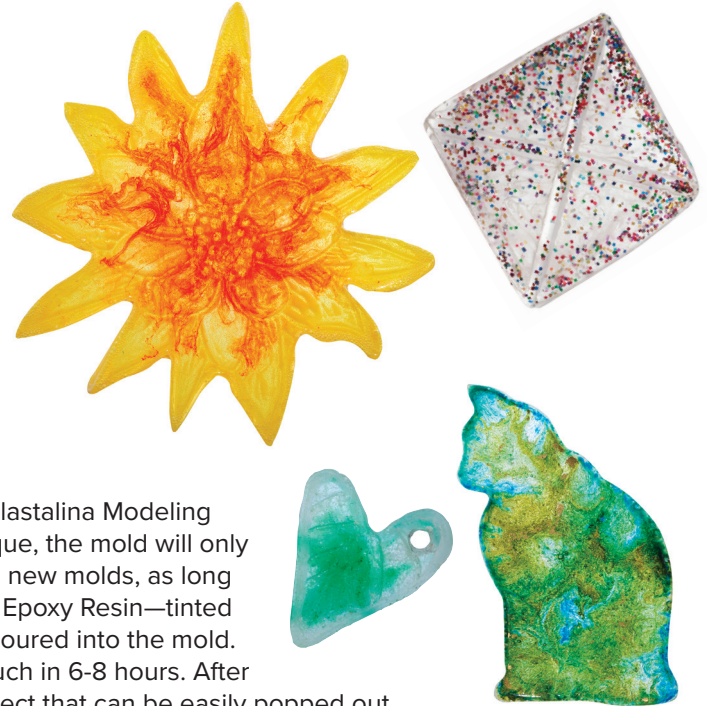
Copyright © 2026  
Dick Blick Holdings Inc.  
All rights reserved

A simple intro to a widely used technique! Build a unique mold and cast an embellished resin piece.

Mold casting is used by fine artists, crafters and artisans, and commercial manufacturers to create sculptural artwork, jewelry, and everyday items. In fact, it's hard to find a household object that hasn't been cast in some way.

In mold casting, a mold is first made either directly from an object or by taking an impression of an original form. Then, a liquid casting material—such as plaster, clay, molten metals, or resin—is poured into the mold. Casting can be as simple or as complex as needed. The earliest known methods of pouring mud into an open stone mold are just as effective and relevant today as the injection molding and thermal molding processes used in modern manufacturing.

In this introduction to mold making and resin casting, a unique shape is carved with sculpture and printmaking tools into Van Aken Plastalina Modeling Clay to create a negative mold. Similar to the lost wax casting technique, the mold will only be used once. However, the clay can be reused many times to create new molds, as long as its kept clean of dust and debris. Once the mold is prepared, Blick Epoxy Resin—tinted with inks or dyes and embellished with inclusions such as glitter—is poured into the mold. Blick Epoxy Resin is a low odor, VOC-free formula that dries to the touch in 6-8 hours. After 72 hours the piece will be fully cured, resulting in a diamond-hard object that can be easily popped out of the mold.



### Required Materials

**Van Aken Plastalina Modeling Clay**, Ivory, 4.5 lb (33268-1095); share one package between eight students

**Fox Run Wooden Rolling Pins**, choice of sizes (30345-); share one between two students

**Blick Epoxy Resin Kit**, 64 oz resin, 64 oz hardener, total of 128 oz (92051-0128); share one kit across class

**Uline Plastic Cups with Lids**, 2oz, package of 250 (03395-1253); need two cups per student

**Safely Disposable Plastic Rinse Cups**, 5 oz, package of 50 (64513-0505); need one cup per student

**Nitrile Powder-Free Disposable Gloves**, choice of sizes, package of 100 (35200-); need one pair per student

**Creativity Street Craft Sticks**, natural, box of 1000 (60401-1001); need one stick per student

**Bella Tavola Mini Torch Combo Pack**, torch and 1.5 ml butane can (34349-2020) or **Ranger Heat It Craft Tool**, (04838-1001); share one across class

**3M General Purpose Sandpaper**, assorted grit, pack of 5 (34255-1911); share one package across class

### Recommended for carving the mold:

**Blick Lino Cutter Set**, handle and six blades (40216-1001); need one per student

**Kemper Double-Ended Ribbon Tools**, set of 5, 6" (30372-1006); share one set between four students

**Richeson Student Clay Modeling Tool Sets**, 7 assorted shapes (30361-1009); share one set between four students

**Xiem Clay Finishing Tools**, strong-firm, set of 5 assorted shapes (30669-1205); share one set between four students

**Colour Shaper Kids Paint Set**, 5 assorted shapes (04935-0601); share one set between four students

**Essdee Ink Tray**, 9-1/2" x 7-7/8" (40156-1007); need one per student

### Recommended for tinting the resin:

**Jacquard Piñata Colors**, starter pack-assorted set of 9, 15 ml (02981-1009); share one set across class

**Ranger Tim Holtz Alcohol Inks**, choice of colors, 14ml (02204-); share a selection of nine colors across class

**Blick Studio Marker Refills**, 25 ml, choice of colors (00862-) share a selection of nine colors across class

**Spectra Sparkling Crystals Glitter**, choice of sizes and colors (61416-); share a selection of colors

**The Ultimate Glitter Collection**, set of 18, 0.5 oz (85912-); share one set across class

**Arnold Grummer's Brilliants Metallic Flakes**, set of Gold, Copper, and Mica, 0.4 oz each (12882-); share one set across class

Ready to order materials?

Go to [www.DickBlick.com/lesson-plan/resin-casts-in-plastalina](http://www.DickBlick.com/lesson-plan/resin-casts-in-plastalina) to access a product bundle for your convenience.

## Preparation

1. Divide three packages of Van Aken Plastalina into eighths. Each student will need one piece.

## Process

1. Use a rolling pin to flatten the piece of clay into a slab approximately 1" thick. The edges can be rough, but the piece should be even, flat, and free of air bubbles.
2. Place the slab onto a tray. This makes it easier to move and store the mold after the resin has been poured, and it also protects the surface in case the mold leaks.
3. Plastilina clay will not harden or dry, so the mold design can be developed over time if needed. Keep in mind this is a reverse process: any mark carved into the clay will protrude when cast in resin. A variety of tools can be used to carve the mold:
  - a. Ribbon tools are good for removing large amounts of material.
  - b. Linoleum cutters can create precise, smooth cuts.
  - c. Wipe-out tools and color shapers are perfect for smoothing out edges.
  - d. Small objects such as shells and keys can be pressed into the clay to add texture or create an exact impression.
4. To add a hanging hole to the finished piece, roll a small cylinder from clay scraps and press it into the clay where you want the hole to be.
5. When the design is finished, set it aside and begin mixing the resin. Blick Epoxy Resin Kits contain two bottles: Part A (Resin) and Part B (Hardener). Mix the resin and hardener in a 1:1 ratio. Once mixed, the resin will remain workable for up to 45 minutes. Put on gloves before opening the bottles. To measure equal amounts, pour the resin into a 2 oz disposable cup, filling it halfway. Then pour the hardener into a second 2 oz cup, also filling it halfway. Pour both parts into a third, larger cup. Use a craft stick to scrape the contents of the smaller cups, ensuring all material transfers to the larger cup. Use the same craft stick to stir the mixture for at least 3 minutes.
6. Spray the mold with Alumilite Mold Release and Conditioner.
7. For an all-over color effect, alcohol ink colorants and glitter can be added into the mixture in the cup and then poured into the mold. To vary the color, pour the resin into the mold first, then add drops of color. Use the craft stick to spread the color as desired. Take care not to disturb the clay walls or base when spreading the color into the resin. Multiple colors can be mixed together for a tie-dye effect.
8. After pouring, bubbles can be removed with a small heat gun or torch.
9. The resin will be dry to the touch in 6–8 hours, 95% cured in 24 hours, and fully cured in 72 hours.
10. Once dry, remove the piece from the mold. Small bits of clay may stick to the resin after removal—scrape them away gently.
11. Lightly sand the edge of the piece, then rinse in warm water.
12. Thread a piece of string through the hole to hang.

## National Core Arts Standards - Visual Arts

### Creating

Anchor Standard 1: Generate and conceptualize artistic ideas and work.

Anchor Standard 2: Organize and develop artistic ideas and work.

### Connecting

Anchor Standard 10: Synthesize and relate knowledge and personal experience through art.



*Step 1: Create a mold using Van Aken Plastalina Modeling Clay.*



*Step 2: Mix resin and hardener in a 1:1 ratio, add colorants as desired and pour into the mold.*



*Step 3: Remove from the mold after 72 hours and buff rough edges with sandpaper.*

### Ready to order materials?

Go to [www.DickBlick.com/lesson-plans/resin-casts-in-plastalina](http://www.DickBlick.com/lesson-plans/resin-casts-in-plastalina) to access a product bundle for your convenience.